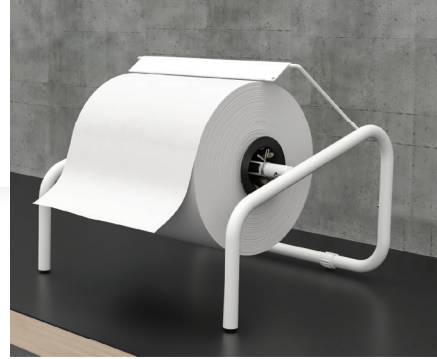


**997400/002**

## 345 Industrial wall or table paper roll holder



Our industrial roll holder is an ideal choice for industrial plants seeking durability and efficiency. Built to withstand heavy usage, this robust holder ensures reliable performance, and is equipped with anti-slip pads. It is delivered in a convenient flat pack, allowing for efficient storage and easy assembly, saving both time and space.

- High quality epoxy powder coated finishing

- Cones to keep the paper in the desired position

- Robust for heavy use, ideal for industrial plants

- Anti-slip rubber feet (for enhanced stability)



- Delivered in small flat pack for efficient storage - easy assembly

### Product details

Color	white (blue cones)
Material	steel
Product dimensions	(wxHxD) 420 x 245 x 345 mm
Packaging	1 pce / carton
Consumable	Paper roll (max. Ø 340 mm, width max.320 mm)